

Oncology Nutrition



Nutrition Support



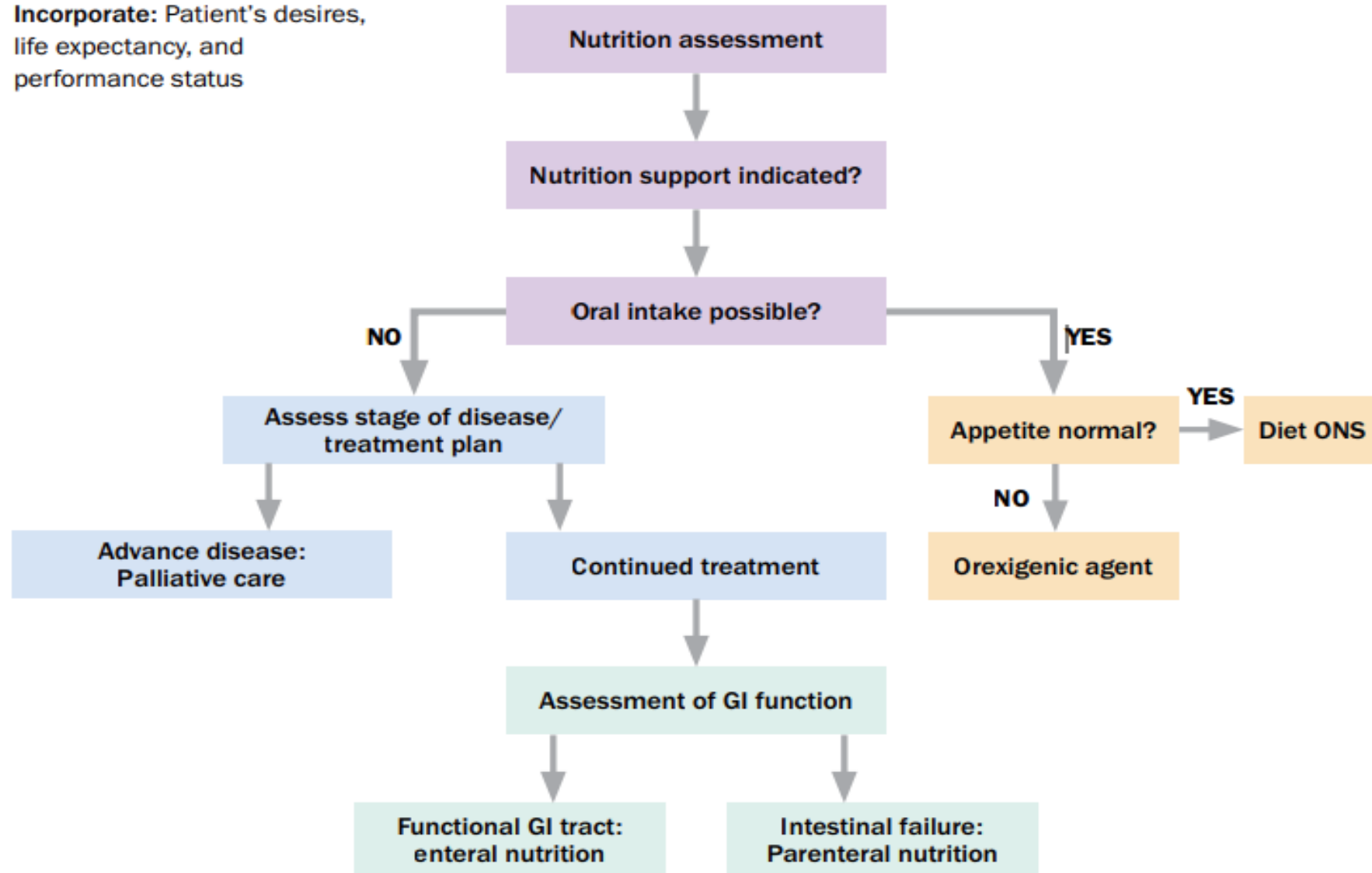
What is nutrition support?



- **A way to meet nutritional needs when eating by mouth is difficult or not an option**
- **Nutrition support options:**
 - Enteral feeding or tube feeding
 - Parenteral nutrition or TPN

When is enteral nutrition indicated?

Incorporate: Patient's desires, life expectancy, and performance status



Enteral nutrition, Tube Feeding

- Still uses the gut
- Helps maintain normal GI and other functions
- Can be used in combination with oral diet

Tube Feeding Formula

- 8-12 oz cans
- Covered as medication through insurance
- Totally nutritionally adequate



Tube Feeding Tubes

Naso-Gastric Tube:

short-term option is a feeding tube from your nose to stomach/or small intestine

PEG:

Long term option, surgical procedure

Both can be removed



Tube Feeding Administration

Bolus Feeding:

Feeding a can of formula via syringe



Pros:

- Mimics normal eating pattern
- Minimal equipment

Challenges:

- Need to administer 4-6 times per day
- Need to use steady hands

Tube Feeding Administration

Gravity Feeding:

IV pole and bag filled with formula



Pros:

- Minimal “hands-on”
- Easy to digest
- Need to administer 2-3 times per day

Challenges:

- Takes 45-60 minutes per feeding
- Need to be sitting up

Tube Feeding Administration

Continuous Feeding:

IV pole and pump



Pros:

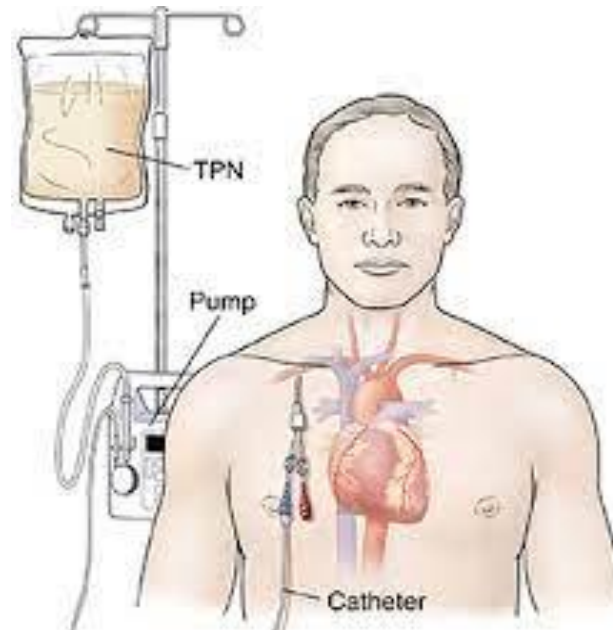
- Slow, consistent delivery
- Easy to tolerate and digest

Challenges:

- Need to run 12-24 hours
- Mobility
- Pump use

Parenteral Nutrition Support

- **Used when gut is not functional for nutrition**
- **Requires IV access**
- **Requires pump/IV pole**
- **Totally nutritionally adequate**
- **Close monitoring of labs**



Potential complications:

- **High blood sugar**
- **High triglycerides**
- **Risk of infection**
- **Liver disorder**

Transitioning Off Nutrition Support

- Typically after treatment is done
- Wean down nutrition support as oral intake increases
- Tube or IV can be removed after it is no longer needed



Thank You!

